

## DOORWAYS OF MALTA



[175]

**[175] Noni, no. 211, Republic Str., Valletta**

The small premises which previously served as a traditional bakery and confectionery, and later as a jazz bar was transformed into an upmarket restaurant. The building underwent various transformations which entailed the removal of several later interventions and accretions, in the process revealing the original form and spaces of the bakery. The external façade was restored to its original state with the retention of the original timber bakery sign which after being restored acquired an over-layer of transparent glass with the superimposition of the Noni logo on it. There is a continuation of the eloquent typographic statement even within the interior of the restaurant. The architects in charge of the restoration and rehabilitation of the property are Archi+.

**[176] Private residence, Bahar iċ-Ċagħaq**

A simple timber doorway with stainless steel highlights offers a dynamic contrast with the helical concrete staircase. Design and architecture by Audrey Galea | Galea & Galea Architects.



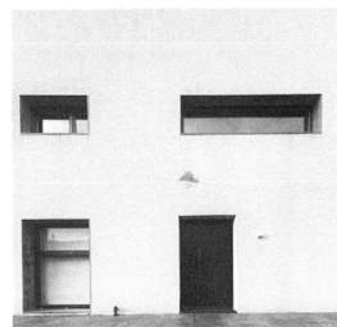
[176]

**[177, 178] 'The White Cube', private residence, Attard**

An architecture that recalls the pioneering residential designs of Le Corbusier. Doors and windows are simple incisions within stark white planes. Design by XYZ Architects.



[177]



[178]



[179]

**[179] eCabs Booking Office, Paceville**

An elegant small space situated in the chaotic urban fabric of Paceville, the mecca of nightlife and entertainment. It serves as a booking office to reserve a cab. Designed by Valentino Architects, it is conceived as if it was hewn out of a giant block of granite. It uses grey colour terrazzo material and tempered glass as a transparent medium between the exterior and internal space. The main contractor was Halmann Vella Ltd.



[180]

**[180] SunLab, Qormi**

A freestanding concrete pavilion with glazed entrance set within the solid forms. Design by Demicoli & Associates; main contractor Vassallo Builders.

## DOORWAYS OF MALTA



[177]

[177, 178] 'The White Cube', private residence, Attard

MODERN



[178]